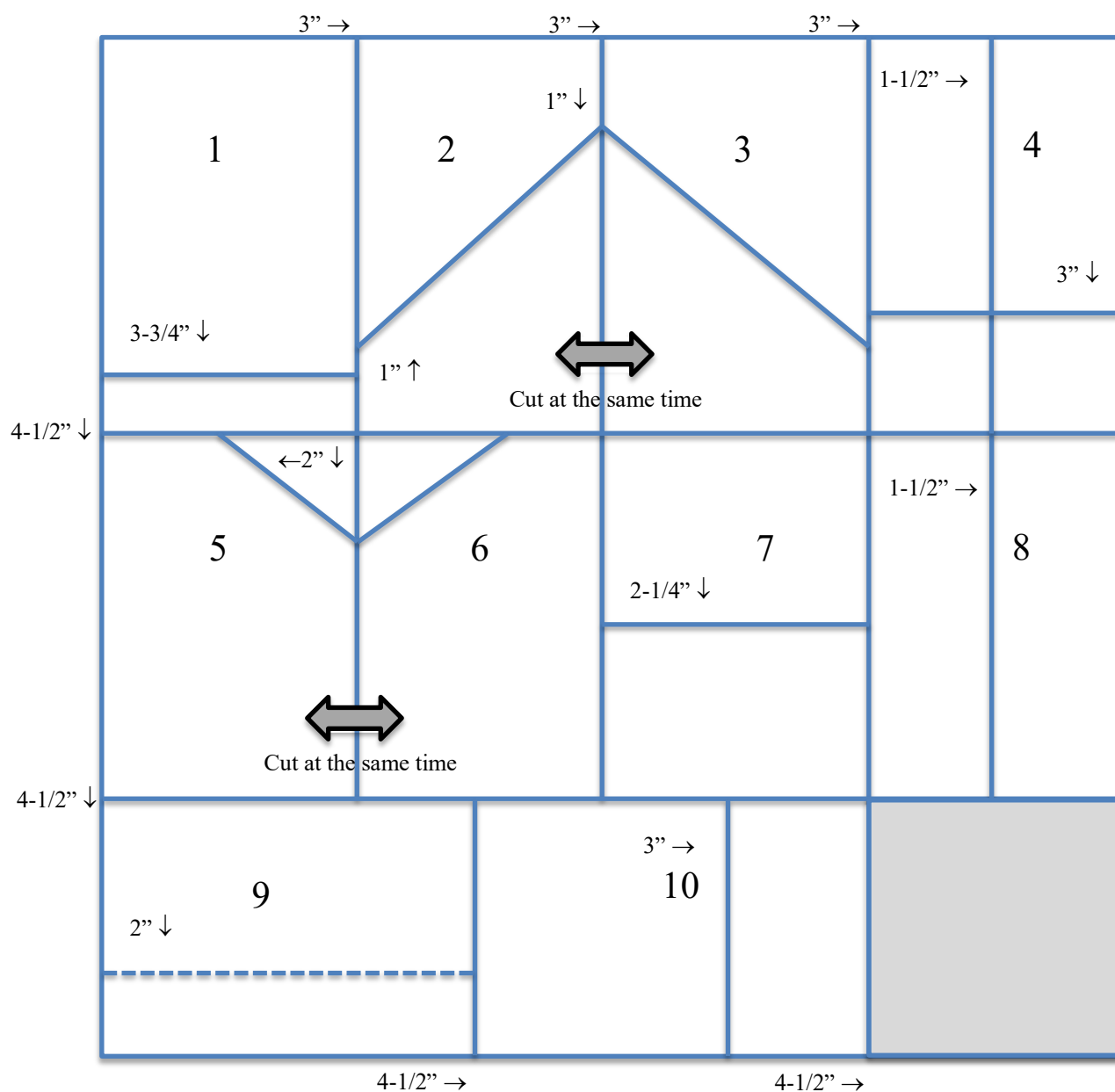




Inspiration Sheet – One Sheet Wonder #3 for Note Cards



This simple OSW template is great for putting together a set of 10 notecards. It is a great way to give an assortment of simple cards as a gift.

Supplies Needed

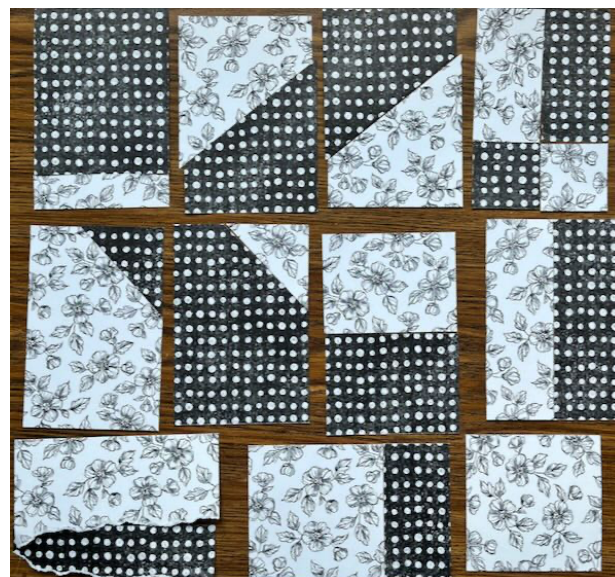
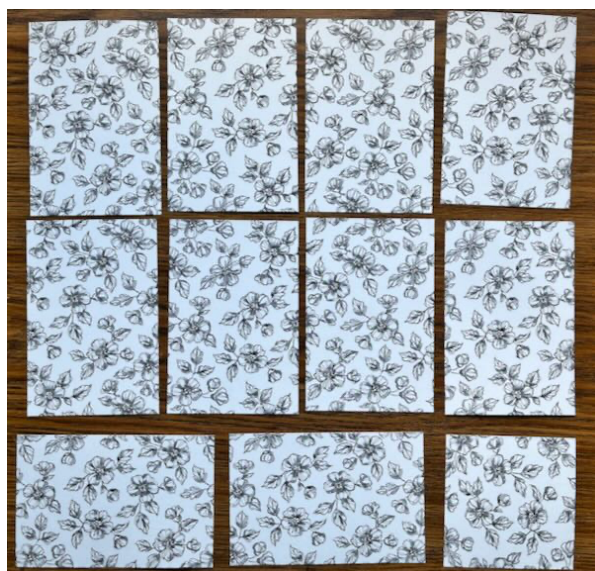
- 10 – notecards (5" x 7", scored at 3-1/2")
- 10 – envelopes for notecards (A1 size)
- 12 x 12 piece of double-sided patterned paper with coordinating sides
- 10 pieces of cardstock 3-1/4" x 4-3/4"
- 10 punched or die cut sentiments for card fronts
- Embellishments of choice



Inspiration Sheet – One Sheet Wonder #3 for Note Cards

Directions

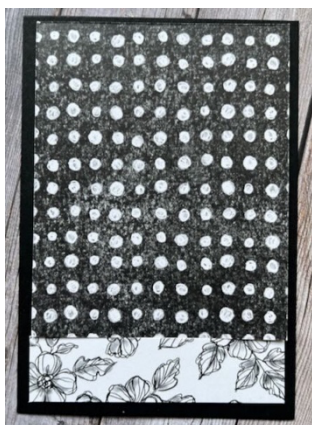
1. Take note of the patterns on both sides of the 12 x 12 piece of paper and determine if any of the patterns have a definite direction that you will have to orient as you cut. All of the card front layouts can be used horizontally or vertically so it is up to you which way the patterns to go.
2. Cut a strip of 12 x 12 paper at 4-1/2", then again at 4-1/2". This will give you with 3 strips: 2 @ 4-1/2" x 12" and 1 @ 3" x 12".
3. Cut the 4-1/2" x 12" strips every 3" to give you 8 pieces measuring 3" x 4-1/2". You can cut both strips at the same time.
4. Cut the 3" x 12" strip every 4-1/2" to give you 2 pieces measuring 3" x 4-1/2". You will have a 3" square left over.
5. Use the cutting directions for each of the 10 pieces of 3" x 4-1/2" to create 10 different card front layouts that get mounted on the 3-1/4" x 4-3/4" pieces of coordinating cardstock. As you cut you will flip one or more of the pieces created to the opposite pattern.
6. Attach the card fronts to the notecards and add punched or die cut sentiments. Embellish as desired.



Inspiration Sheet – One Sheet Wonder #3 for Note Cards

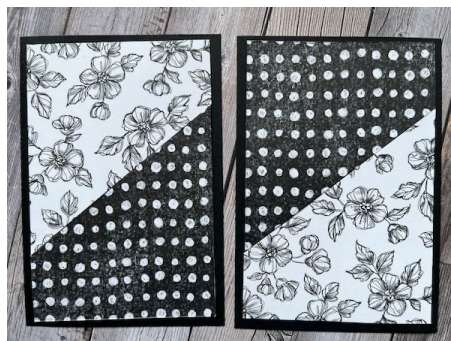
Card Front #1

Cut at 3-3/4" along the long side.



Card Front #2 & #3

Cut both pieces at the same time, but first flip one to the opposite pattern. Measure 1" down from the top right corner and 1" up from the bottom left corner and cut between markings (eyeballing this measurement works great too!). Use the top from one piece with the bottom from the other.



Card Front #4

Cut in half on the short edge at 1-1/2", then stack and cut along the long edge at 3". Flip opposite pieces.



Inspiration Sheet – One Sheet Wonder #3 for Note Cards

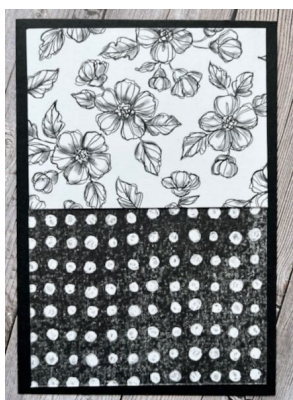
Card Front #5 & #6

Cut both pieces at the same time, but first flip one to the opposite pattern. Measure 2" down and 2" over from the top right corner and cut between markings Use the top from one piece with the bottom from the other.



Card Front #7

Cut in half at 2-1/4" along the long edge.



Card Front #8

Cut in half along the short edge at 1-1/2".



Inspiration Sheet – One Sheet Wonder #3 for Note Cards

Card Front #9

Cut or tear along the short edge at 2" (tear the paper towards you with your right hand).



Card Front #10

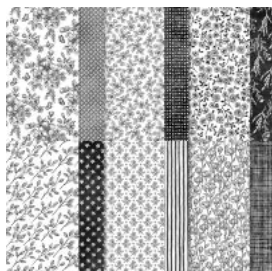
Cut along the long edge at 3".



Inspiration Sheet – One Sheet Wonder #3 for Note Cards



Product List



Perfectly Penciled 12" X 12"
(30.5 X 30.5 Cm) Designer
Series Paper

[159244]

\$12.00



Basic White Note Cards &
Envelopes

[159232]

\$7.00



Basic Black 8-1/2" X 11"
Cardstock

[121045]

\$9.25



Tuxedo Black Memento Ink
Pad

[132708]

\$6.00



Shaded Summer Cling Stamp
Set

[155783]

\$23.00



Vellum 8-1/2" X 11"
Cardstock

[101856]

\$10.00



Bough Punch

[157711]

\$19.00



Handmade Tag Punch

[159690]

\$19.00



Lasting Label Punch

[158651]

\$19.00



Double Oval Punch

[154242]

\$19.00

Inspiration Sheet – One Sheet Wonder #3 for Note Cards



Rectangular Postage Stamp
Punch

[152709]

\$19.00



Label Me Fancy Punch

[151297]

\$19.00



Decorative Circle Punch

[159174]

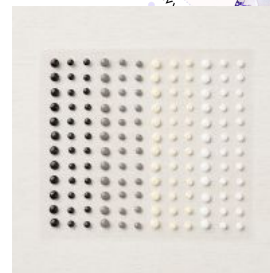
\$19.00



Stylish Shapes Dies

[159183]

\$30.00



Classic Matte Dots

[158146]

\$7.00