



Inspiration Sheet – One Sheet Wonder #3.5 & Card Holder

Use the OSW #3 Template for notecards to make a set of 10 regular sized (A2) cards to give as a gift.



Supplies Needed for Cards

- 10 – card bases (5-1/2" x 8-1/2", scored at 4-1/4")
- 10 – envelopes
- 2 – 12 x 12 pieces of double-sided patterned paper that coordinate
- 10 pieces of cardstock 3-1/4" x 4-3/4"
- 10 punched or die cut sentiments for card fronts
- Embellishments of choice

Supplies Needed for Card Holder

- 10" x 11" cardstock for base
- 10" x 6-1/8" cardstock for lid
- The leftovers from the 2 - 12 x 12 pieces of patterned paper after making the cards
 - (2) 5-3/4" x 4-1/4", (2) 1-3/4" x 4-1/4" from one leftover piece
 - (2) 5-3/4" x 1-3/4", (2) 1-3/4" x 2", (1) 5-3/4" x 2" from the other leftover piece
- A punched or die cut sentiment for card holder front



Inspiration Sheet – One Sheet Wonder #3.5 & Card Holder

Directions for Cards

1. Take note of the patterns on the 12 x 12 pieces of paper and determine if any of the patterns have a definite direction that you will have to orient as you cut. You can cut both pieces at the same time.
2. With the pattern/design on the paper vertical, cut the 12 x 12 papers in half at 6". Take one of the halves to cut for the cards and save the other halves to use for the card holder.
3. Turn the 6" x 12" halves and cut at 9" along the 12" side.
4. Cut the 3" x 6" pieces at 4-1/2" to give you pieces measuring 3" x 4-1/2". (The remaining 1-1/2" x 3" pieces are extra.)
5. Cut the 6" x 9" pieces in half at 3" along the 6" side. Cut the 3" x 9" pieces in half at 4-1/2" along the 9" side. This will give you 4 piles of pieces measuring 3" x 4-1/2".
6. Use the cutting directions for the OSW #2 Template for Notecards and choose 5 of the 10 choices for cutting the 3" x 4-1/2" pieces. (My cutting photos reflect these choices: #s 1, 2, 4, 5 and 9. My finished card samples reflect #s 2, 4, 5, 9, and 10) Cut the 2 pieces at the same time and then switch out the pieces that were cut to give you 2 opposite layouts.
7. Attach the pieces to the coordinating cardstock measuring 3-1/4" x 4-3/4" and mount onto the card bases. Add punched or die cut sentiments and embellish as desired.



Step 1



Step 2



Step 3

Inspiration Sheet – One Sheet Wonder #3.5 & Card Holder



Step 4



Step 5



Step 6

Inspiration Sheet – One Sheet Wonder #3.5 & Card Holder

Directions for Card Holder

1. Score the 10" x 11" cardstock for the card holder base 4-1/2" from each edge along the 11" side and 2" from each edge along the 10" side. Crease on all score lines in the same direction towards the inside of the holder.
2. Cut on the dashed lines as shown. Add adhesive where shown by an X.
3. Fold up the small flaps in the middle of the sides first, then attach the side without adhesive following by the sides with adhesive to secure.
4. Score the 10" x 6-1/8" cardstock for the card holder lid 2" from each edge. Crease on all score lines, cut on the dashed lines and add adhesive where shown by an X.
5. Fold up the one side flaps without adhesive first and adhere the opposite side flaps on top. Then fold down the middle flaps over the other two to finish off the sides.
6. Use the other halves of the leftover pattern paper from making the cards to cut pieces to decorate the card holder. Use one piece for the holder base and the other for the holder lid.
7. For the holder base, start by cutting 1/4" off along the 6" side. Turn the paper and cut at 4-1/4" twice along the 12" side. Turn the remaining piece and cut at 4-1/4", then cut the 3-1/2" x 4-1/4" piece in half at 1-3/4". The 1/4" strip and the (1-1/2" x 4-1/4" pieces are extra.)
8. For the holder lid, cut 1/4" off along the 6" side. Turn the paper and cut at 2" two times and 1-3/4" two times. Take one of the 2" x 5-3/4" pieces and cut two 1-3/4" x 2" pieces. There will be leftovers.
9. Attach the patterned paper pieces to the base and lid and embellish the front of the card holder with a punched or die cut sentiment.



Inspiration Sheet – One Sheet Wonder #3.5 & Card Holder



Inspiration Sheet – One Sheet Wonder #3.5 & Card Holder



OSW # 2 Cutting Choices Shown: 2, 4, 5, 10 and 9

Inspiration Sheet – One Sheet Wonder #3.5 & Card Holder

Product List



Nature's Prints Bundle
(English)

[158801]

\$55.75



Nature's Prints Cling
Stamp Set (English)

[158793]

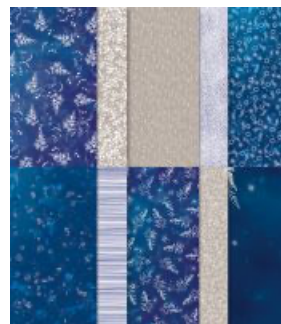
\$25.00



Natural Prints Dies

[158800]

\$37.00

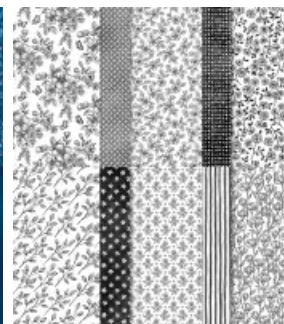


Sun Prints 12" X 12"
(30.5 X 30.5 Cm)

Designer Series Paper

[158790]

\$12.00



Perfectly Penciled 12"
X 12" (30.5 X 30.5 Cm)

Designer Series Paper

[159244]

\$12.00



Texture Chic 12" X 12"
(30.5 X 30.5 Cm)
Specialty Designer
Series Paper

[158808]

\$15.00



Season Of Chic Bundle
(English)

[158816]

\$57.50



Season Of Chic
Photopolymer Stamp
Set (English)

[158810]

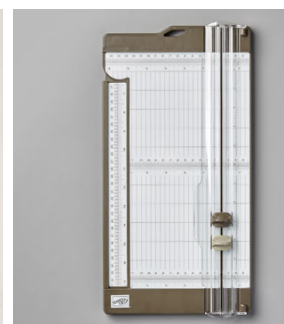
\$27.00



Chic Dies

[158815]

\$37.00



Paper Trimmer

[152392]

\$25.00