

# Stampin' Card Template - #11 Timeless Tag Layout

A classic tag layout to love.

## Supplies Needed

- 5-1/2" x 8-1/2" cardstock base, scored at 4-1/4"
- 2" x 4-3/4" patterned paper #1
- 1" x 4" patterned paper #2
- 4" x 2" cardstock for tag (or use tag die)
- 1-1/2" - 2" cardstock shape (punched or die cut)
- 3-4" of ribbon



## Directions

1. Choose 2 pieces of patterned paper that coordinate. Piece #1 should be "busy" and have a pattern that showcases many colors if possible. The other piece should have a subtle pattern that coordinates.
2. Attach the 2" x 4-3/4" piece of patterned paper (#1) to the card base aligning it along the right side about 3/8" from each edge.
3. Attach the 1" x 4" strip of patterned paper (#2) perpendicular to patterned paper #1 and 1" from the bottom edge of the card base. This piece will be 1/8" from the right and left edges.
4. Stamp images (or sentiment) on cardstock tag. Punch hole in tag (if not using tag die) and attach ribbon.
5. Use dimensionals on the back of the tag to pop it up and attach it overlapping both pieces of patterned paper and parallel to piece #1.
6. Choose a small circle die or punch for sentiment ( or accent image). This piece should overlap the edge of the tag at the intersection where the pattern papers meet. Half of this piece will need to be popped-up with dimensionals and the other half attached directly to the tag.
7. Decorate and embellish as desired.

## Ways to Vary the Template

- 2-1/8" x 4- 7/8" coordinating cardstock to layer under patterned paper #1
- Use an embossing folder on the patterned paper .
- Use ribbon to layer on top of the 4" strip
- Cover the entire front of card base in patterned paper #3 cut 4-1/4" x 5-1/2"

# Stampin' Card Template - #11 Timeless Tag Layout



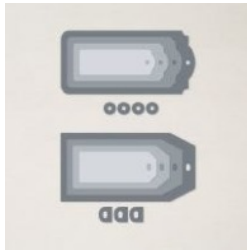
A classic tag layout to love.



# Stampin' Card Template - #11 Timeless Tag Layout

A classic tag layout to love.

## Product List



**Tailor Made Tags Dies**  
[\[155563\]](#)  
 \$22.00



**Stylish Shapes Dies**  
[\[159183\]](#)  
 \$30.00



**Mini Pocket Envelope Dies**  
[\[159167\]](#)  
 \$29.00



**Splendid Day 12" X 12" (30.5 X 30.5 Cm) Specialty Designer Series Paper**  
[\[159666\]](#)  
 \$15.00



**Hues Of Happiness 12" X 12" (30.5 X 30.5 Cm) Designer Series Paper**  
[\[158822\]](#)  
 \$12.00



**Splendid Thoughts Bundle (English)**  
[\[159677\]](#)  
 \$51.25



**Happiness Abounds Bundle (English)**  
[\[158824\]](#)  
 \$49.50



**Happy Forest Friends 12" X 12" (30.5 X 30.5 Cm) Designer Series Paper**  
[\[158941\]](#)  
 \$12.00



**Happier Than Happy Bundle (English)**  
[\[158952\]](#)  
 \$48.50



**Ringed With Nature Bundle (English)**  
[\[159889\]](#)  
 \$53.00



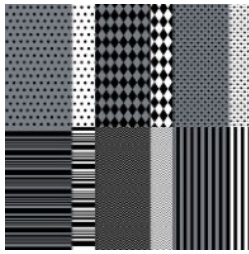
**Rings Of Love 12" X 12" (30.5 X 30.5 Cm) Designer Series Paper**  
[\[159939\]](#)  
 \$0.00



**Pool Party & Soft Sea Foam Cards & Envelopes**  
[\[159940\]](#)  
 \$0.00

# Stampin' Card Template - #11 Timeless Tag Layout

A classic tag layout to love.



**Black & White Designs 12" X 12" (30.5 X 30.5 Cm) Designer Series Paper**  
[\[159861\]](#)  
 \$12.00



**Gingham Cottage 12" X 12" (30,5 X 30,5 Cm) Designer Series Paper**  
[\[159651\]](#)  
 \$30.00



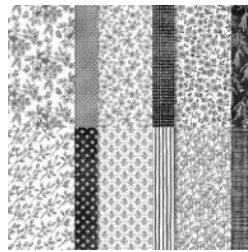
**Celebrate With Tags Bundle (English)**  
[\[159867\]](#)  
 \$55.75



**Awash In Beauty 12" X 12" (30.5 X 30.5 Cm) Designer Series Paper**  
[\[158973\]](#)  
 \$12.00



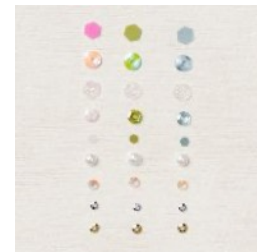
**True Beauty Bundle (English)**  
[\[158984\]](#)  
 \$59.25



**Perfectly Penciled 12" X 12" (30.5 X 30.5 Cm) Designer Series Paper**  
[\[159244\]](#)  
 \$12.00



**Tea Boutique 6" X 6" (15.2 X 15.2 Cm) Designer Series Paper**  
[\[158659\]](#)  
 \$12.00



**For Everything Fancy Sequins**  
[\[159187\]](#)  
 \$15.00