

Inspiration Sheet - Front Step Pop-up Card

A stand-up card perfect for display!



Front Step Card Base Supplies

- 4-1/4" x 11" cardstock base
- 4" x 3-1/4" patterned paper
- 4-1/8" x 3-3/8" coordinating cardstock
- 4" x 1" patterned paper
- 4-1/8" x 1-1/8" coordinating cardstock
- 4" x 1-3/4" patterned paper
- 4-1/8" x 1-7/8" coordinating cardstock
- 4" x 5-1/4" Basic White cardstock for the back

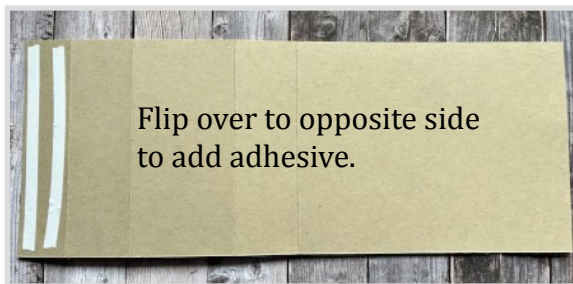
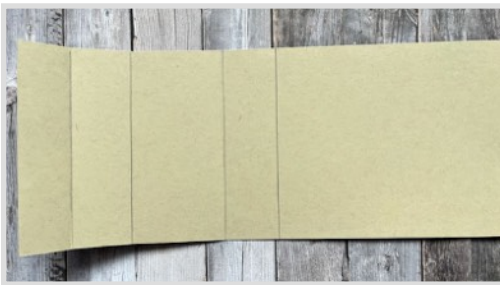
Pop-up Panel Supplies

- 3" x 5-1/4" cardstock
- 3" x 1-1/4" patterned paper (optional)
- 3" x 3-1/2" patterned paper (optional)
- 2-3/4" x 3-1/4" neutral cardstock (optional)



Directions for Step Card Base Assembly

1. On the long side (11") of the card base score at 1", 2-1/4", 4-1/4", & 5-1/2".
2. Fold the cardstock base in half on the 5-1/2" score line and crease well. Crease on each additional score line in the same direction towards the inside of the card.
3. Apply strong adhesive to the 1" section and adhere to the opposite side of the card base as shown. This creates the step on the card base.
4. Attach the patterned papers to their coordinating cardstock pieces and attach to the card base.



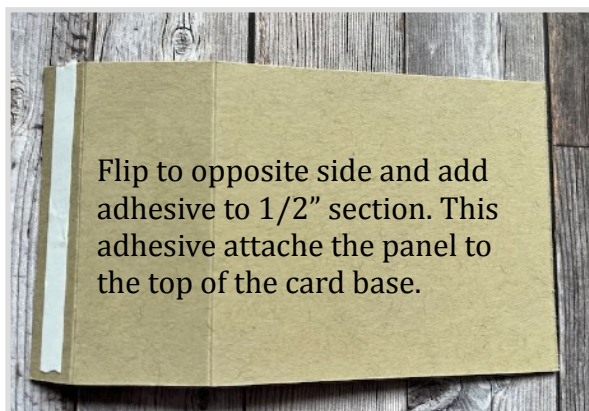
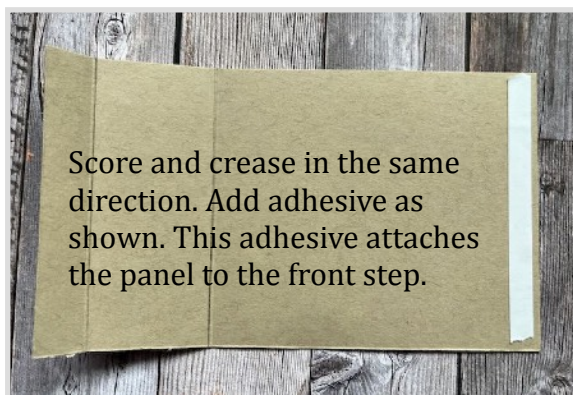
Inspiration Sheet - Front Step Pop-up Card

A stand-up card perfect for display!



Directions for Pop-up Panel

1. On the long side (5-1/4") of the cardstock score at 1/2" and 1-3/4" from one edge.
2. Crease on both score lines in the same direction. Flip over and add adhesive to the 1/2" section.
3. To attach to front step card base: Close the Front Step card base by pushing the front step toward the top of the card. Fold the pop-up panel at the 1-3/4" score line so that the 1/2" section with adhesive is at the back. Line up the score line with the edge of the patterned paper at the top of the card base and press into place. Next, close the front step in the other direction. Unfold the Pop-up Panel, lay flat and adhere using the adhesive on the bottom. The pop-up panel and the front step card base should now move together to open and close.
4. Optional: cover the pop-up panel sections with 3" x 1-1/4" & 3" x 3-1/2" patterned papers
5. Optional: Attach a 2-3/4" x 3-1/4" piece of neutral cardstock on the panel to decorate with the focal point image.



Inspiration Sheet - Front Step Pop-up Card

A stand-up card perfect for display!



Inspiration Sheet - Front Step Pop-up Card

A stand-up card perfect for display!

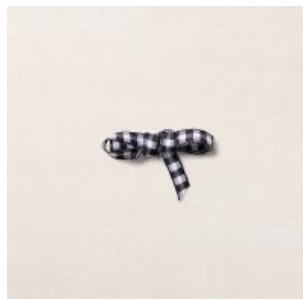
Product List



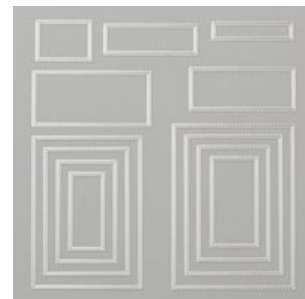
**Hello Harvest
Bundle (English)**
[\[159644\]](#)
\$49.50



**Rustic Harvest
12" X 12" (30.5 X
30.5 Cm)
Designer Series
Paper**
[\[159633\]](#)
\$12.00



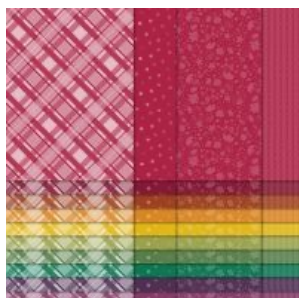
**Black & White
1/4" (6.4 Mm)
Gingham Ribbon**
[\[156485\]](#)
\$7.00



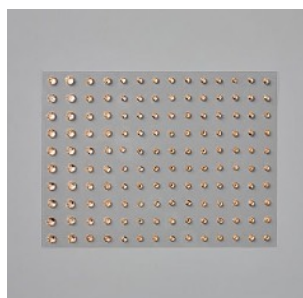
**Stitched
Rectangles Dies**
[\[151820\]](#)
\$35.00



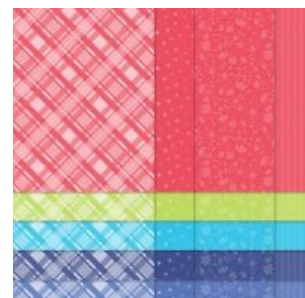
**Fond Of Autumn
Bundle (English)**
[\[159838\]](#)
\$52.00



**Regals 6" X
6" (15.2 X 15.2
Cm) Designer
Series Paper**
[\[159256\]](#)
\$12.00



**Champagne
Rhinestone
Basic Jewels**
[\[151193\]](#)
\$6.00



**2022-2024 In
Color™ 6" X
6" (15.2 X 15.2
Cm) Designer
Series Paper**
[\[159253\]](#)
\$12.00



**Scary Cute
Bundle (English)**
[\[159852\]](#)
\$41.25



Paper Trimmer
[\[152392\]](#)
\$25.00



**Tuxedo Black
Memento Ink Pad**
[\[132708\]](#)
\$6.00



**Jet Black StazOn
Ink Pad**
[\[101406\]](#)
\$10.00