

Inspiration Sheet - Using Circle Punches in 4 Ways

Fun ways to use the 1-3/4" & 2" Circle Punches

#1 - Circle Background

- 1-3/4" & 2" Circle Punches
- 4" x 5-1/4" cardstock
- 5-1/2" x 8-1/2" card base
- Scraps of Designer Series Paper
- Embossing Folder of choice

Directions

1. Punch circles in the 2 sizes out of 6-7 different patterns of Designer Series Paper. (Three 2" circles, and four 1-3/4" circles)
2. Adhere the circles over the 4" x 5-1/4" piece of cardstock overlapping a few and going off the edges.
3. Use an embossing folder on this same piece. This is like "quilting" the card front.
4. Attach to the card base, add a focal point greeting and embellish as desire.



#2 - Alphabet Negative Circles

- 1-3/4" & 2" Circle Punches
- 7" x 8-1/2" cardstock, scored at 3-1/2"
- 1" x 8-1/2" Soft Succulent Fine Shimmer paper
- Designer Series Paper, enough for 5 - 2" circles
- Gold Fine Shimmer paper, enough for 5 - 1-3/4" circles

Directions

1. Punch 5 circles in each of the two papers.
2. Use letter dies to cut out a word (like "happy" or "hello") with one letter in each circle.
3. Adhere the 1-3/4" circles under the 2" circles so that the gold shimmer paper shows the negative image of the alphabet dies.
4. Attach the 1" x 8-1/2" strip of shimmer paper along the card fold. Adhere the circles across the front of the card base spelling out the word.
5. Embellish as desired.



Inspiration Sheet - Using Circle Punches in 4 Ways

Fun ways to use the 1-3/4" & 2" Circle Punches

#3 - Circle Flap Fun Fold

- 1-3/4" & 2" Circle Punches
- 4-1/4" & 11" card base scored at 4-1/4" and 8-1/2"
- 4" x 4" Basic White (2)
- 4" x 4" Designer Series Paper
- 4" x 2-1/4" Designer Series Paper (optional)
- Scraps for punching circles

Directions

1. Score along the 11" side at 4-1/4" and 8-1/2". Fold on the score lines toward each other. The 8-1/2" score line creates the front flap. Punch the 2" circle punch over the score line and centered.
2. (Optional) Adhere the 4" x 2-1/4" DSP on the flap. Repunch the 2" circle to remove the DSP covering the hole.
3. Adhere the 4" x 4" DSP on the card front.
4. Adhere the 2 - 4"x4" Basic White pieces on the inside. Repunch the 2" circle to remove the cardstock covering the hole.
5. Create a small focal point on a 1-3/4" circle and layer on a 2" coordinating cardstock color. Adhere circles.
6. Close card and attach the layered circles inside the hole using adhesive only on the bottom part where it attaches to the card front. To ensure proper placement carefully open and close card to center.



Inspiration Sheet - Using Circle Punches in 4 Ways

Fun ways to use the 1-3/4" & 2" Circle Punches

#4 - Pop-Out Swing Fold

- 1-3/4" & 2" Circle Punches
- 5-1/2" & 8-1/2" card base scored at 4-1/4"
- 4" x 5-1/4" Designer Series Paper
- 5" x 8" Basic White scored at 2", 4", 6"
- 4-3/4" x 1-3/4" Designer Series Paper (2)
- Scraps for punching circles

Directions

1. Adhere the 4" x 5-1/4" DSP to the card base.
2. Punch the 2" circle in top right corner through both pieces.
3. Score the 8"x 5" Basic White cardstock at 2", 4" and 6" Fold on the 4" score line first, which folds this piece in half. Press with a bone folder. Fold the other score lines in opposite directions as shown.
4. Attach one 2" section to the back of the card base front using adhesive on top, bottom and the side nearest the middle of the card base.
5. Attach the other 2" section to the inside back of the card base.
6. Adhere the 4-3/4" x 1-3/4" DSP to the middle 2" sections.
7. Stamp greeting and punch out with 1-3/4" circle. Layer onto a 2" circle of coordinating cardstock.
8. Attach layered circles through the window hole adhering only on the right side of the score line that shows through the window.



Inspiration Sheet - Using Circle Punches in 4 Ways

Fun ways to use the 1-3/4" & 2" Circle Punches

Product List



**Irresistible
Blooms Bundle
(English)**
[161150]
\$54.00



**Hello, Irresistible
6" X 6" (15.2 X
15.2 Cm) Designer
Series Paper**
[161139]
\$12.50



**Tropical Leaf
Punch**
[161248]
\$22.00



**Tropical Leaf
Bundle (English)**
[161249]
\$37.75



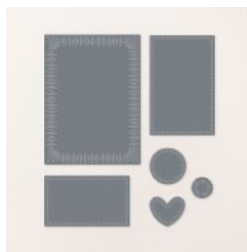
**1-3/4" (4.4 Cm)
Circle Punch**
[119850]
\$22.00



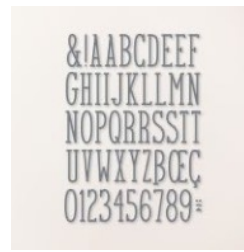
**2" (5.1 Cm) Circle
Punch**
[133782]
\$22.00



**Fancy Flora 6" X
6" (15.2 X 15.2
Cm) Designer
Series Paper**
[160413]
\$12.00



**Radiating Stitches
Dies**
[161595]
\$30.00



**Alphabet à La
Mode Dies**
[160750]
\$42.00



**Fine Shimmer 12"
X 12" (30.5 X 30.5
Cm) Paper Pack**
[160428]
\$10.00



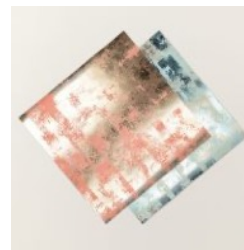
**Gold & Silver
1/8" (3.2 Mm) Trim
Combo Pack**
[161633]
\$9.00



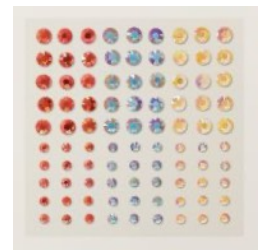
**Gold Faceted
Adhesive Backed
Sequins**
[160536]
\$8.00



**Basics 3 D
Embossing
Folders**
[161598]
\$30.00



**Dry Brushed
Metallic 12" X
12" (30.5 X 30.5
Cm) Specialty
Designer Series
Paper**
[160837]
\$8.00



**Iridescent Pastel
Gems**
[160429]
\$8.00