

Inspiration Sheet – 3 Types of Pop-Out Cards



Add some movement to the inside of your card.

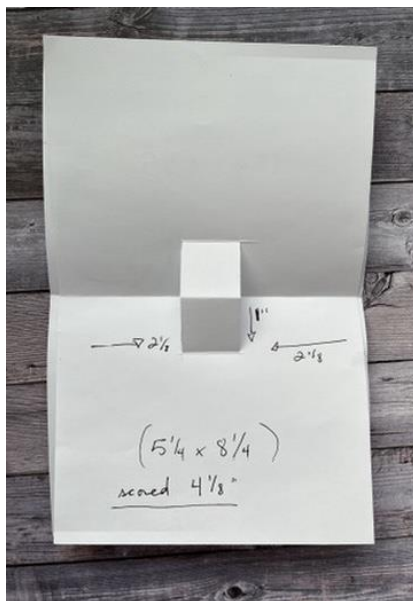
1 – Basic Pop-Out

Supplies

- 5-1/2" x 8-1/2" cardstock for card base
- 5-1/4" x 8-1/4" cardstock for insert
- Paper Trimmer

Directions (this pop-out can be any size width or depth)

1. Score the 5-1/4" x 8-1/4" piece of cardstock in half at 4-1/8".
2. With the cardstock closed measure along the score line at 2-1/8" and make a 1" cut with the Paper Trimmer through the score line towards the inside of the card. Flip to the opposite side at 2-1/8" and make another 1" cut.
3. Open up the cardstock and score between the two cut lines.
4. Push the pop-out mechanism towards the middle of the open piece of cardstock so it folds on the inside.
5. Attach the pop-out feature to the front of the mechanism making sure it stays inside the cardstock when card is closed.



Inspiration Sheet – 3 Types of Pop-Out Cards



Add some movement to the inside of your card.

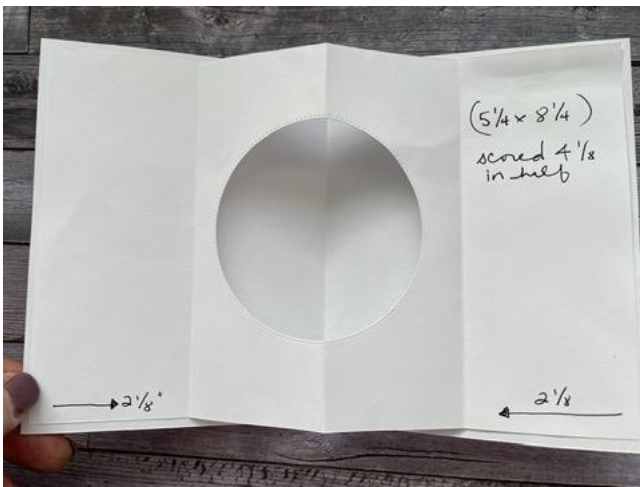
2 – Tunnel Pop-Out

Supplies

- 5-1/2" x 8-1/2" cardstock for card base scored at 4-1/4"
- 5-1/4" x 8-1/4" cardstock or DSP
- 2" x 5-1/4" DSP
- A large shape die (circle, square, rectangle, etc) **no larger than " in diameter**

Directions

1. Score the 5-1/4" x 8-1/4" piece of cardstock at 4-1/8".
2. Align the shaped die centered over the middle score line and cut a hole.
3. Fold it like a W so that the middle score line where the hole is cut is the "mountain" in the W.
4. Stamp sentiment or other decorative images in the middle of the 5-1/2" x 8-1/2" card base over the center score line. (Do this step before folding on the score line.) Or do step 5 and stamp the sentiment image somewhere else.
5. Optional: Attach 2" x 5-1/8" pieces of DSP or stamped cardstock on the inside of the 5-1/2" x 8-1/2" card base on either side of the score line.
6. Attach the tunnel pop-out mechanism to the card base one side at a time leaving an even amount of space on all edges.
7. Finish decorating the tunnel pop-out feature by attaching small die cuts around the opening.



Inspiration Sheet – 3 Types of Pop-Out Cards



Add some movement to the inside of your card.

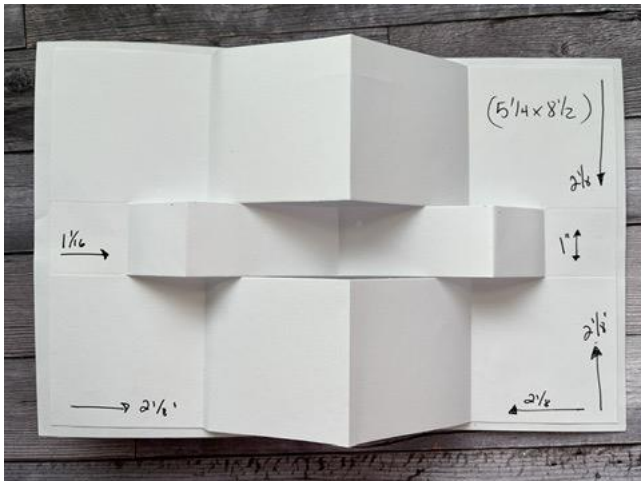
3 – Shutter Pop-Out Card

Supplies

- 5-1/2" x 8-1/2" cardstock for card base scored at 4-1/4"
- 5-1/4" x 8-1/2" cardstock shutter mechanism (Basic White preferred)
- (4) 2" squares of DSP (or more!)
- (2) 7/8" x 2" or DSP
- (2) 7/8" squares of DSP

Directions

1. Score the 5-1/4" x 8-1/2" piece of cardstock in landscape orientation at 2-1/8", 4-1/4", and 6-3/8".
2. Turn and score in portrait orientation at 2-1/8" from each side.
3. Score between the two 2-1/8" score lines at 1" (or 1-1/16") on each side. (see picture)
4. Turn and cut on the 2-1/8" score lines between the 1" score lines.
5. Fold on the score lines so that the top and bottom rows create a "W" and the middle row makes an "M".
6. Attach 2" squares of DSP as desired in any of the 8 locations. Attach the 7/8" wide DSP in the middle row.



Inspiration Sheet – 3 Types of Pop-Out Cards

Add some movement to the inside of your card.

Product List



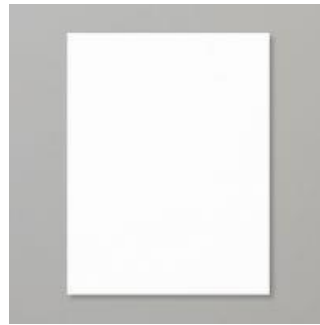
152392

\$26.00



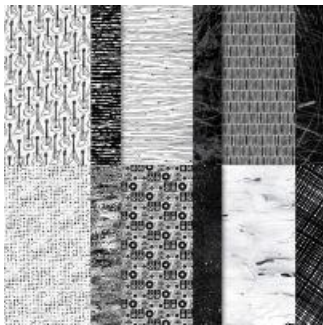
159229

\$9.00



159276

\$10.50



162695

\$12.50



162706

\$47.50



163865

\$23.00