

# Robin's Pick 2 Scenery Wonder Template

This template creates 5 cards! (Papercrafting Playdate Episode 122)



## Supplies Needed

- 2 different pieces of 6" x 6" Designer Series Paper with scenery (or anything). Choose the pieces from one package of DSP and make sure they have coordinating colors and patterns.
- 5 card bases and extra layering pieces:

### Card 1

- 4-1/4" x 11" cardstock that coordinates with the DSP colors

### Card 2

- 5-1/2" x 8-1/2" in cardstock that coordinates with the DSP colors
- 1-1/4 x 5-1/4" cardstock in same color as the card base

### Card 3

- 5-1/2" x 8-1/2" Basic White cardstock
- 4" x 5-1/4" Basic White cardstock
- 3" x 4-1/2" cardstock that coordinates with the DSP colors

### Card 4

- 5-1/2" x 8-1/2" cardstock that coordinates with the DSP colors
- 1-1/4 x 5-1/4" (3 pieces) cardstock in same color as the card base
- 2-3/4" x 3-3/4" Basic White

### Card 5

- 5-1/2" x 8-1/2" Basic White cardstock
- 1-1/4" x 5-1/2" Basic White cardstock

- Embossing Folder(s)
- 5 die cuts/punched shapes for sentiment stamping in Basic White cardstock
- Adhesives: Liquid Glue and Dimensionals
- Ribbon and/or embellishments

## Cutting Directions for the 2 pieces of DSP – see next page for photos

### **Pattern #1 – larger scene that encompasses entire 6" x 6"**

1. With the "scene" on the paper going horizontal so that the sky is on top and the ground is on the bottom, cut off 3/4" from either the top or bottom. Make this choice (top vs bottom) by looking at the colors/pattern on the front and back and seeing which coordinates better with the other piece from Pattern 2 for Card 5. Then cut off 3/4" from the end of this strip (also for Card 5). You will have a piece measuring 5-1/4" x 3/4" and 3/4" x 3/4".
2. Turn the DSP, measure and cut at 3-1/4" along the 6" edge. This will give you a piece measuring 5-1/4" x 3-1/4" and 5-1/4" x 2-1/2".

### **Pattern #2 – smaller scenes that can be broken apart**

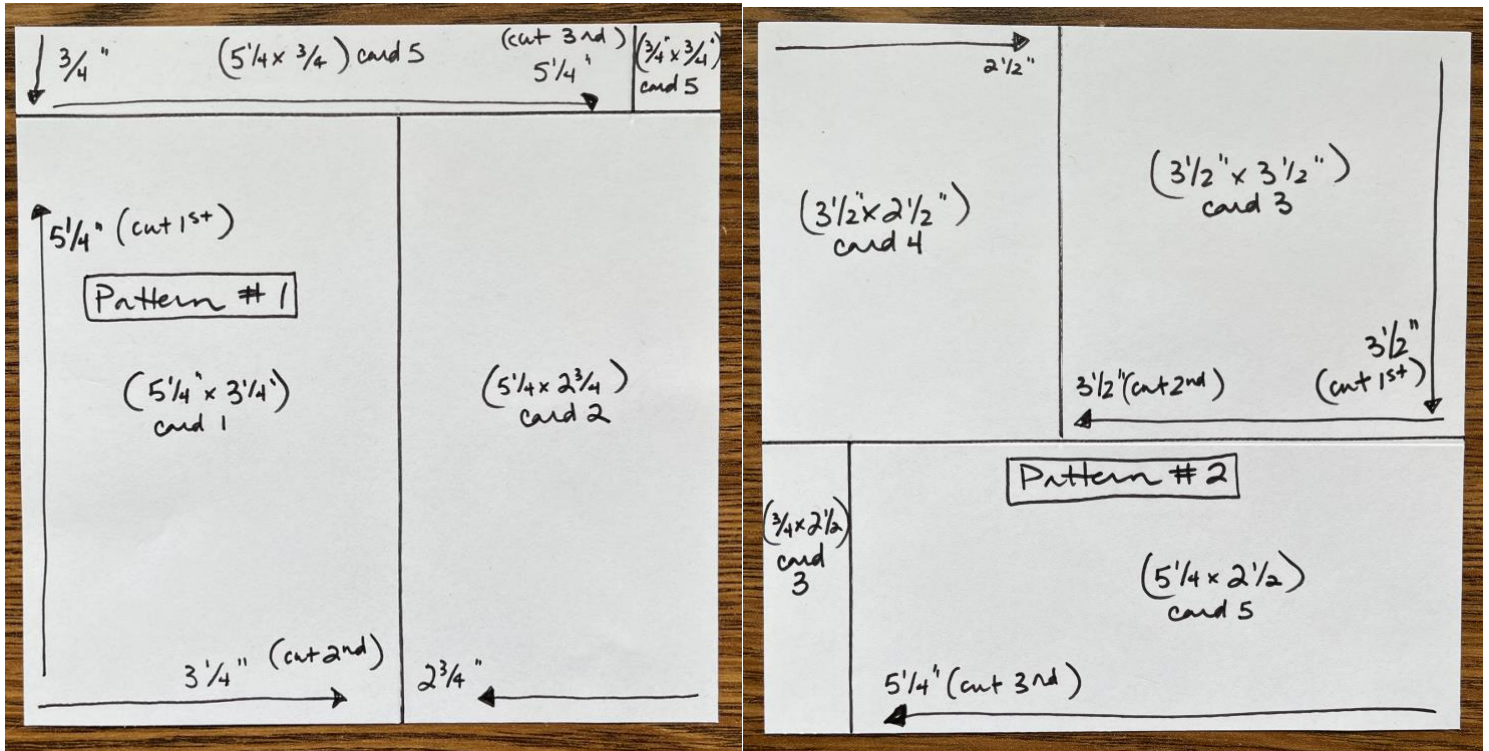
1. Same as with pattern 1, with the scene going horizontally, turn the DSP and cut at 3-1/2". Look at the scenes on the DSP and determine which areas have the best smaller scenes. This gives you strips that measure 6" x 3-1/2" and 6" x 2-1/2".
2. Cut the 6" x 3-1/2" strip at 2-1/2", keeping in mind where your scenes are. The 2-1/2" cut can come from either side. This gives you two pieces: 3-1/2" x 3-1/2", and 3-1/2" x 2-1/2".
3. Cut the 6" x 2-1/2" strip at 5-1/4" giving your 2 pieces: 5-1/4" x 2-1/2" and 2-1/2" x 3/4".

# Robin's Pick 2 Scenery Wonder Template

This template creates 5 cards! (Papercrafting Playdate Episode 122)



Use the photos below to determine which pieces go on each of the five cards.



# Robin's Pick 2 Scenery Wonder Template

This template creates 5 cards! (Papercrafting Playdate Episode 122)



## Card 1 – Partial Panel Card Front



Cut a  $\frac{3}{4}$ " strip from the bottom edge of the card front to the score line. Use an embossing folder only on the  $\frac{3}{4}$ " strip, then attach the strip to the inside of the card so it no longer moves. This gives you a partial and narrow card front. Attach the 5-1/4" x 3-1/4" piece of DSP from Pattern 1. Attach a greeting die/focal point overlapping the edge of the card front.

## Card 2 – Embossed Strip (1/3 & 2/3)

Emboss the 1-1/4" x 5-1/4" strip of coordinating cardstock with an embossing folder. Attach the cardstock strip and the 5-1/4" x 2-3/4" piece of DSP on card front leaving a 1/4" border all around the outside edges of the card front.



# Robin's Pick 2 Scenery Wonder Template

This template creates 5 cards! (Papercrafting Playdate Episode 122)



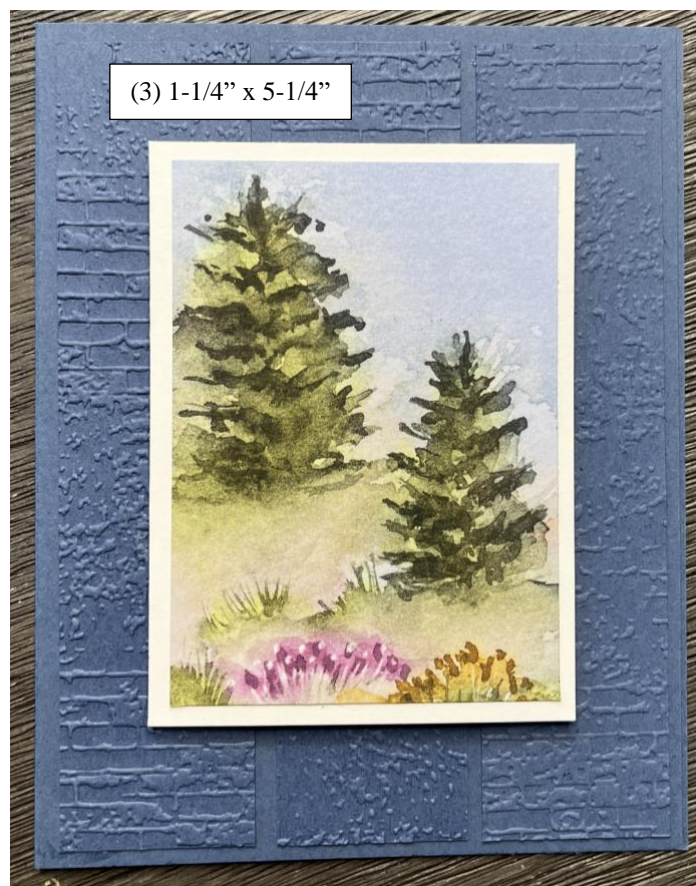
## Card 3 – Graduated Strips Scene



Use an embossing folder on the 4" x 5-1/4" piece of Basic White and attach to card base. Take the 3-1/2" x 3-1/2" scenery DSP from Pattern 2 and cut into graduated strips. Depending on the scene, you can choose which side you want the smallest strip. The strips are cut at 1/2", 3/4", 1", 1-1/4". Attach the strips to the 3" x 4-1/2" piece of cardstock leaving 3/8" sticking out on the left & right sides. (Tip: Cut a piece of scratch paper 4-1/2" x 3-1/2" to use as a guide for gluing on the strips. This will help with getting the strips aligned on the top of bottom.) Pop up the focal point on card front. Attach the 3/4" x 2-1/2" piece of DSP horizontally overlapping a few of the graduated strips and used as an accent for the greeting focal point

## Card 4 – Three Embossed Background Strips

Use an embossing folder on the three 1-1/4" x 5-1/4" pieces of cardstock and attach to card base spacing evenly. There will be 1/8" margin around the outside edge and in between the strips. Attach the 3-1/2" x 2-1/2" piece of DSP on the 2-3/4" x 3-3/4" piece of Basic White. Center and pop up the focal point on card front.



# Robin's Pick 2 Scenery Wonder Template

This template creates 5 cards! (Papercrafting Playdate Episode 122)



## Card 5 – Narrow Folded Front



Score 1" from the 5-1/2" edge of the card front. Fold back towards the card front so that you can see the inside of the card. Attach the 2-1/2" x 5-1/4" piece of DSP along the fold of the card front. (Part of this piece will be tucked under the folded-back feature. Secure the fold-back with dimensionals. Attach the 3/4" x 5-1/4" piece of DSP to the inside of the card along the edge that shows when the card is closed. Use an embossing folder on the 1-1/4" x 5-1/2" piece of Basic White cardstock and attach to the folded back part of the card front. Pop up a greeting focal point on the folded-back piece. Use the 3/4" square of DSP as an accent to the focal point.

Add greetings to card fronts on die cuts or punched shapes. To add extra interest layer die-cut leaves or flowers behind the greetings. Add ribbon and embellishments for a finishing touch.



# Robin's Pick 2 Scenery Wonder Template

This template creates 5 cards! (Papercrafting Playdate Episode 122)



## Product List



Thoughtful Journey 6" X 6"  
(15.2 X 15.2 Cm) Designer  
Series Paper



Simply Said Mix & Match  
Photopolymer Stamp Set  
(English)



Layering Leaves  
Photopolymer Stamp Set  
(English)



Flowers Of Beauty Dies



Exposed Brick 3 D  
Embossing Folder



Timber 3 D Embossing  
Folder



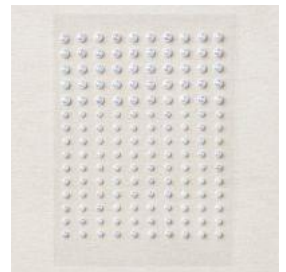
Dashing Designs 3 D  
Embossing Folder



Eyelet 3 D Embossing Folder



Distressed Tile 3 D  
Embossing Folder



Iridescent Pearl Basic Jewels