

Inspiration Sheet – Double Accordion Gatefold Card

This card opens to an amazing inside accordion design. (Papercrafting Playdate 127)



Supplies

- 5-1/2" x 9-1/2" cardstock for card base
- 3" x 10-5/8" cardstock for inside accordion

DSP Layers

- (4 pieces) 1 7/8" x 5 1/4" (2 for inside and 2 for outside the card base)
- (4-5 pieces) 1 7/8" x 2 3/4" (for accordion)
- (1 piece) 4" x 5 1/4" (for inside card base)

Cardstock Layers

- (4 pieces) 2" x 5 3/8" (2 for inside and 2 for outside the card base)
- (4-5 pieces) 2" x 2 7/8" (for accordion)
- (1 piece) 4 1/8" x 5 3/8" for inside card base)



Directions

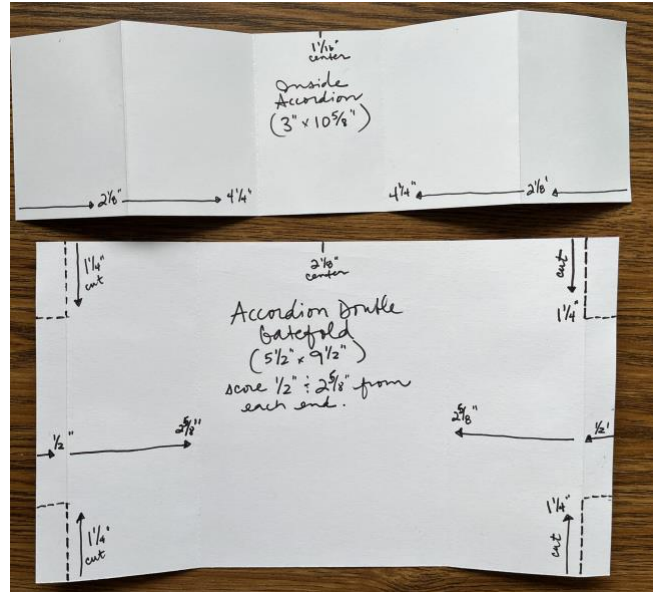
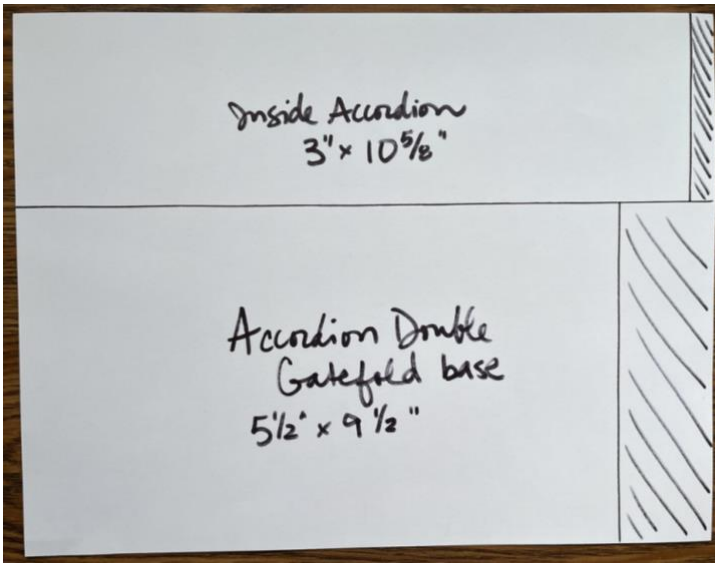
1. Score the card base at scored at 1/2" and 2 5/8" from each end.
2. Cut 1-1/4" from the top and bottom of each 1/2" score line and cut out. This leaves a 3" tab for attaching the accordion piece. Fold these tabs towards the back of the card for now.
3. Fold one side of the gatefold and crease well, then bring the other side and fold/adjust the score line to meet the edge of the first gatefold so there is no gap and crease well.
4. Attach the inside and outside layers of cardstock and DSP to the card base.
5. Make a pencil mark near the top center of the inside middle section.
6. Score the inside accordion at scored at 2-1/8" and 4-1/4" from each end. This creates 5 equal sections. (The middle section will be attached to the inside of the card eventually.)
7. Fold the accordion as shown in the picture so that there are "mountain folds" on either side of the center section. The left side of the accordion is going to fold into the right side so that all the sections will be folded on top of each other when the card is closed. There will be a small amount of cardstock on the left edge that will "creep" out from the fold. You can trim this off if desired.
8. Attach the DSP/Cardstock Layers to the accordion piece. It is optional to add layers to the middle section.
9. Make a pencil mark at the top center of the middle section.
10. With the card base open and flat, adhere the middle accordion section to the center of the inside section of the card base using the pencil marks to align.
11. Fold the 3" tabs towards the center of the card and add adhesive. Attach the outermost accordion sections to the tabs while both the card base and accordion are perfectly flat.
12. Decorate the accordion sections!

Options

- For a slightly less thick card, choose just one layer of either cardstock or DSP on each section. You can use either of the dimensions listed above depending on how much margin you want in each section.
- The accordion pieces can be made larger or smaller than 3" tall depending on what you want to showcase. Adjust the tabs on the 1/2" score line to the height of the accordion fold.

Inspiration Sheet – Double Accordion Gatefold Card

This card opens to an amazing inside accordion design. (Papercrafting Playdate 127)



Inspiration Sheet – Double Accordion Gatefold Card

This card opens to an amazing inside accordion design. (Papercrafting Playdate 127)



Inspiration Sheet – Double Accordion Gatefold Card

This card opens to an amazing inside accordion design. (Papercrafting Playdate 127)

Product List



Frames & Flowers Specialty
12" X12" (30.5 X 30.5 Cm)
Designer Series Paper



Season Of Green & Gold 12" X 12" (30.5 X 30.5 Cm)
Specialty Designer Series Paper



Meandering Meadows 6" X 6" (15.2 X 15.2 Cm) Designer Series Paper



Wildly Flowering 12" X 12" (30.5 X 30.5 Cm) Designer Series Paper



To Market 12" X 12" (30.5 X 30.5 Cm) Designer Series Paper



2024–2026 In Color™ 6" X 6" (15.2 X 15.2 Cm) Designer Series Paper



Poised Peony Cling Stamp Set (English)



Changing Leaves Bundle (English)



Market Goodness Bundle (English)



Textured Floral Photopolymer Stamp Set (English)



Greetings Of The Season Bundle (English)