



Inspiration Sheet - White Craft Ink Techniques Part 2

Putting Stampin' Up!'s White Craft Ink Pad to Work

Supplies Used for Techniques

- White Craft Ink Pad & Refill
- Sponge Dauber
- Heat Tool
- White Embossing Powder
- Classic Inks
- Dark & Medium Cardstock Tones
- Embossing Folders
- Acrylic Block
- Water Painter & Blender Pen



Technique #1 - Stepped-Up Embossing Folder Direct to Paper With Color

This technique will make the embossed image created by an embossing folder come to life, especially when using a medium cardstock color. Begin by using a Blending Brush to add a colored background to the cardstock. If your embossing folder has a distinct picture, add color to specific areas where you know the design will be raised (like the sunflowers). Once you've added the inked background, run the cardstock through the embossing folder. Now the fun part! Add White Craft Ink to the raised embossing one of two ways: use a Sponge Dauber tool to gently add color to the raised cardstock OR gently dragging the entire ink pad gently over the embossed image (direct to paper technique). Hold the ink pad at a 45° angle and barely press against the cardstock.



Inspiration Sheet - White Craft Ink Techniques Part 2

Putting Stampin' Up!'s White Craft Ink Pad to Work

Technique #2 - White Washing or White Washing with Added Color

For this technique you are coloring in an outline image using the White Craft ink. Choose a medium or dark cardstock for best results. The outline image can be stamped with Tuxedo Black Ink or heat embossed with White embossing powder

Create a "painting" pallet of white ink on an acrylic block, dish, or coated paper plate. Spread a light, thin layer of the White Craft Ink inside a stamped outline image. The two best tools to spread the ink are Blender Pens or Water Painters/paintbrush. If using a Water Painter (paint brush) add a drop or two of White Craft Ink to a few drops of water to create a runny ink about the consistency of half & half. If using a Blender Pen, you do not need to dilute the White Craft ink. Fill in the image and let dry. Leave white or add color over the white wash using a Blender Pen and Classic ink refills.



Technique #3 - Blended Ink on Die Cuts (or punched shapes)

Inspiration Sheet - White Craft Ink Techniques Part 2

Putting Stampin' Up!'s White Craft Ink Pad to Work

This easy technique really makes your solid shaped die cuts pop! Use the same color ink as the cardstock used to cut out the die cut. Shade a portion of it with this ink and a blending brush. Depending on the shape, this could be the middle portion. Adding the same color ink will darken the die cut. Then use the White Craft ink pad and a blending brush or sponge dauber to shade an opposite portion of the shape. This will lighten the shade of the cardstock color. When finished, there will be 2-3 shades on the die cut. Use the die cuts as a background or focal point on your card front!



Inspiration Sheet - White Craft Ink Techniques Part 2

Putting Stampin' Up!'s White Craft Ink Pad to Work

Product List



Charming Day
Bundle (English)
[\[166136\]](#)
\$52.00



Perfectly Pears
Bundle (English)
[\[166154\]](#)
\$42.25



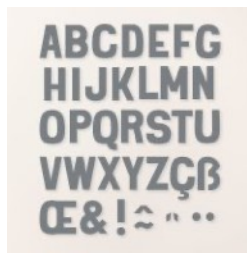
Sunflower 3 D
Embossing Folder
[\[166145\]](#)
\$12.00



Dotted Circles 3 D
Embossing Folder
[\[163789\]](#)
\$12.00



Impressions Abloom
Bundle (English)
[\[165611\]](#)
\$48.50



Party Alphabet Dies
[\[165263\]](#)
\$99.00



Uninked Stampin'
Craft Pad & Whisper
White Refill
[\[147277\]](#)
\$10.50



Blender Pens
[\[102845\]](#)
\$14.00



Sponge Daubers
[\[133773\]](#)
\$7.50



Basics Wow!
Embossing Powder
[\[165679\]](#)
\$21.00



Small Blending
Brushes
[\[160518\]](#)
\$14.00



Heat Tool (Us And
Canada)
[\[129053\]](#)
\$32.00